



**31 Crescentdale, Gloucester, GL2 9ER**

**£1,100 Per Month**

Thomas & Thomas property are pleased to be offering this two bedroom house in Longford, Gloucester.

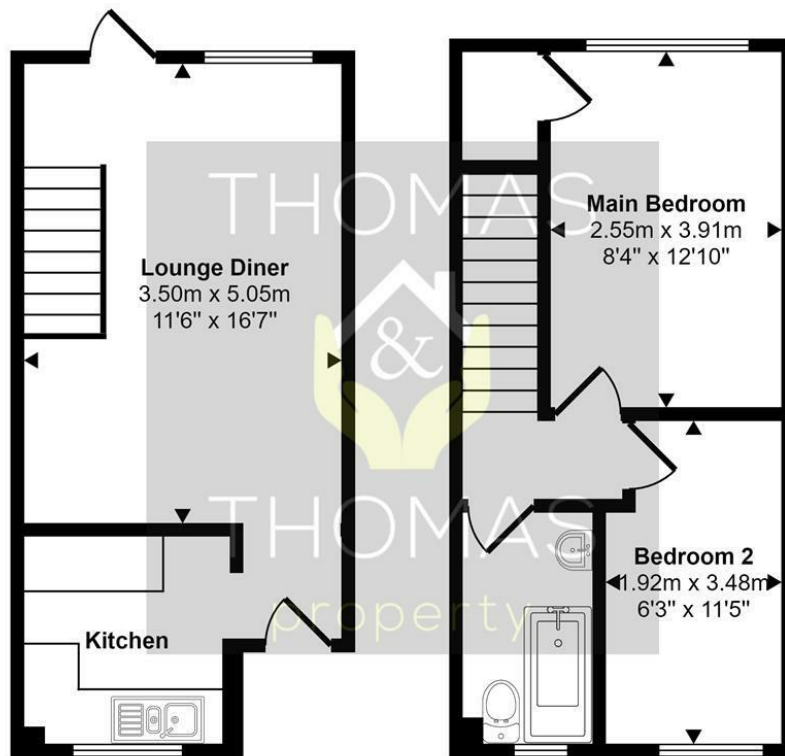
The property briefly comprises of, entrance hallway, kitchen, lounge with patio door to the private rear garden, modern fitted bathroom with shower over bath and two bedrooms.

The property is warmed via gas central heating, double glazed and has allocated parking. The rear garden has side access.

Available March

- Two Bedroom House
- Allocated Parking
- Private Rear Garden
  - Longford
- Fully Managed By Thomas and Thomas
- Available March





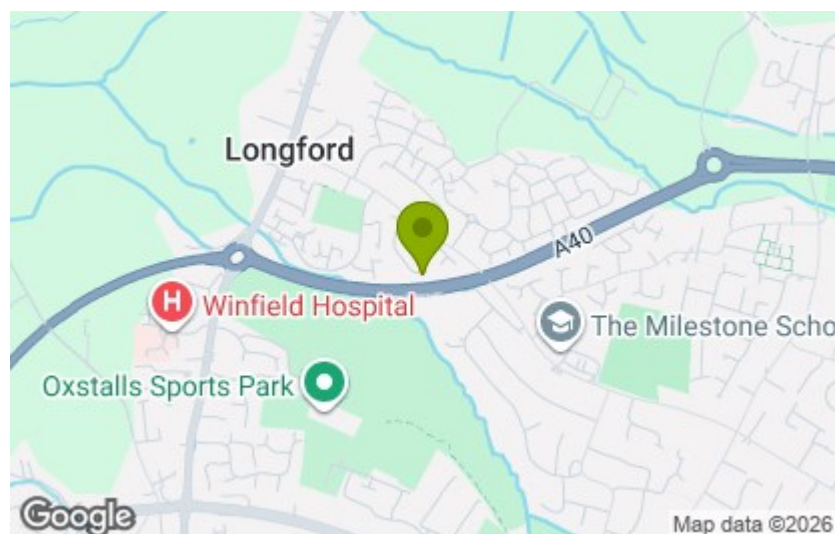
Ground Floor

First Floor

This floorplan is only for illustrative purposes and is not to scale. Measurements of rooms, doors, windows, and any items are approximate and no responsibility is taken for any error, omission or mis-statement. Icons of items such as bathroom suites are representations only and may not look like the real items. Made with Made Snappy 360.

Energy Efficiency Rating		Current	Potential
Very energy efficient - lower running costs			
(92 plus) A			
(81-91) B			
(69-80) C			
(55-68) D			
(39-54) E			
(21-38) F			
(1-20) G			
Not energy efficient - higher running costs			
England & Wales			88
			73
		EU Directive 2002/91/EC	

Environmental Impact (CO <sub>2</sub> ) Rating		Current	Potential
Very environmentally friendly - lower CO <sub>2</sub> emissions			
(92 plus) A			
(81-91) B			
(69-80) C			
(55-68) D			
(39-54) E			
(21-38) F			
(1-20) G			
Not environmentally friendly - higher CO <sub>2</sub> emissions			
England & Wales			
		EU Directive 2002/91/EC	



These particulars, whilst believed to be accurate are set out as a general outline only for guidance and do not constitute any part of an offer or contract. Intending purchasers should not rely on them as statements of representation of fact, but must satisfy themselves by inspection or otherwise as to their accuracy. No person in this firm's employment has the authority to make or give any representation or warranty in respect of the property.